

# Barrier-free Facilities in Central Government Offices

Currently, barrier-free facilities provided in Central Government Offices include:

- Accessible entrances/exits on G/F of East Wing and West Wing, GGO (*Photo 1*);
- Accessible service counters with height suitable for wheelchair users and assistive listening system for hearing-impaired users (*Photo 2*);
- Accessible lifts (*Photo 3*);
- Braille and tactile markings on lift control buttons (*Photo 4*);
- Accessible toilets (*Photo 5*);
- Accessible carpark space (*Photo 6*);
- Visual fire alarms;
- Auto-swing doors for wheelchair users; and
- Tactile guide paths to main entrances (*Photo 7*).

## Photos of barrier-free facilities

(1a)



(1b)



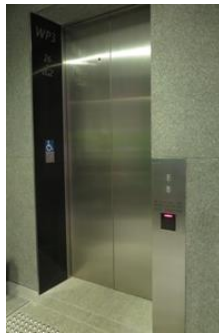
(1c)



(2)



(3)



(4)



(5)



(6)



(7)



# Barrier-free Facilities in North Point Government Office

Currently, barrier-free facilities provided in North Point Government Office include:

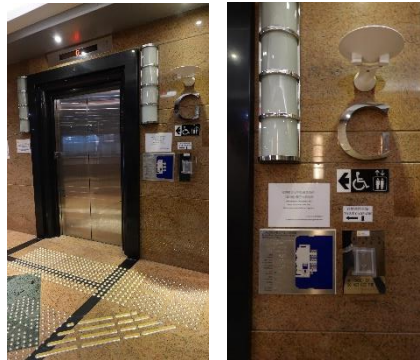
- Accessible entrance/exit on G/F at North Point Government Office;
- Accessible service counters with height suitable for wheelchair users (*Photo 1*);
- Accessible lifts (*Photo 2*);
- Braille and tactile markings on lift control buttons (*Photo 3*);
- Accessible toilets (*Photo 4*);
- Accessible carpark space (*Photo 5*);
- Visual fire alarms; and
- Tactile guide paths to main entrances (*Photo 6*).

## Photos of barrier-free facilities

(1)



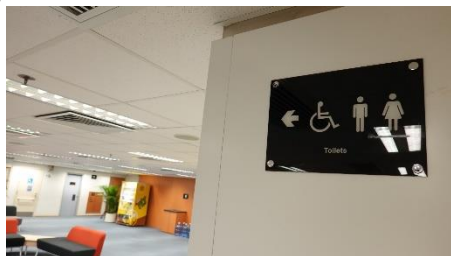
(2)



(3)



(4)



(5)



(6)



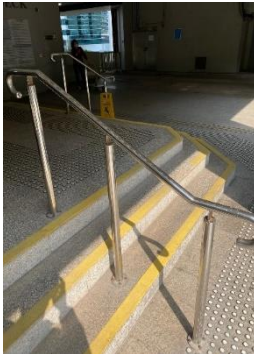
## Barrier-free Facilities in Queensway Government Offices

Currently, barrier-free facilities provided in the Queensway Government Offices (QGO) include:

- Accessible entrance/exit on G/F at QGO and staircase with handrails (*Photo 1*);
- Accessible service counters with height suitable for wheelchair users and assistive listening system for hearing-impaired users (*Photo 2*);
- Accessible lifts (*Photo 3*);
- Braille and tactile markings on lift control buttons (*Photo 4*);
- Accessible toilets (*Photo 5*);
- Accessible carpark space;
- Visual fire alarms; and
- Tactile guide paths to main entrances (*Photo 6*).

### Photos of barrier-free facilities

(1)



(2)



(3)



(4)



(5)



(6)

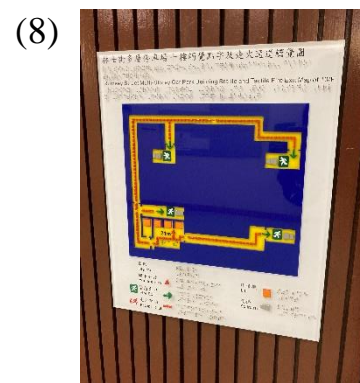
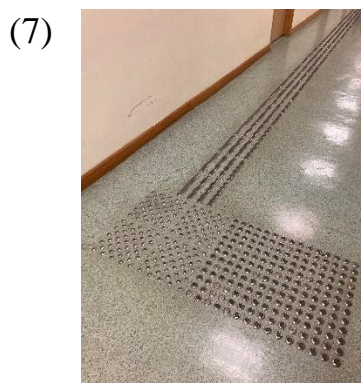
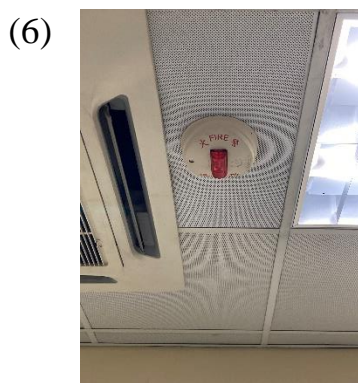


## Barrier-free Facilities in Rumsey Street Multi-storey Carpark Building

Currently, barrier-free facilities provided in Rumsey Street Multi-storey Carpark Building include:

- Accessible entrance/exit on 1/F at Rumsey Street Multi-storey Carpark Building;
- Accessible service counters with height suitable for wheelchair users (*Photo 1*);
- Accessible lifts (*Photo 2*);
- Braille and tactile markings on lift control buttons (*Photo 3*);
- Accessible toilets (*Photo 4*);
- Accessible carpark space (*Photo 5*);
- Visual fire alarms (*Photo 6*);
- Tactile guide paths to main entrances (*Photo 7*); and
- Tactile and Braille Maps (*Photo 8*).

### Photos of barrier-free facilities



## Barrier-free Facilities in Fairmont House

Currently, barrier-free facilities provided in the Fairmont House (a pre-1997 building) include:

- Staircase with handrails (*Photo 1*);
- Visual fire alarms (*Photo 2*); and
- Lifts are sufficiently wide for wheelchair users.

### Photos of barrier-free facilities

(1)



(2)



## Barrier-free Facilities in Immigration Tower

Currently, barrier-free facilities provided in Immigration Tower include:

- Accessible entrance/exit on G/F at Immigration Tower (*Photo 1*)
- Accessible lifts (*Photo 2*);
- Accessible carpark space (*Photo 3*);
- Visual fire alarms (*Photo 4*); and
- Tactile guide paths to main entrances (*Photo 5*).

### Photos of barrier-free facilities



## Barrier-free Facilities in Revenue Tower

Currently, barrier-free facilities provided in Revenue Tower include:

- Accessible entrance/exit on G/F at Revenue Tower (*Photo 1*);
- Accessible service counters with height suitable for wheelchair users (*Photo 2*);
- Accessible doorbell with height suitable for wheelchair users (*Photo 3*);
- Accessible lifts (*Photo 4*);
- Braille and tactile markings on lift control buttons (*Photo 5*);
- Visual fire alarms (*Photo 6*);
- Accessible toilets (*Photo 7*); and
- Accessible carpark space (*Photo 8*).

### Photo of barrier-free facilities

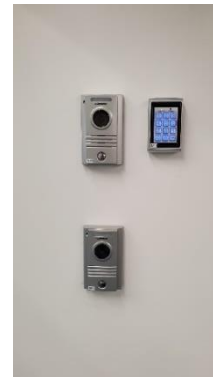
(1)



(2)



(3)



(4)



(5)



(6)



(7)



(8)

